



LOOK TO PSI
Performance • Service • Integrity

LenSaver Dots

LenSaver Dots serve a number of purposes. If you are having trouble getting blocking pads to stick to coated lenses, using a LenSaver Dot under the blocking pad will help it adhere better. These transparent dots are used on both the front and backside of the lens to protect it from scratches and adhesive residue during finishing. At just pennies per dot, you can't go wrong, especially when processing expensive coated lenses.



Features & Benefits

- Prevents damage to the lens from the edger chuck
- Prevents slippage and scratches during finishing and deblocking
- Transparent so layout markings are visible underneath
- Double tabbed for quick and easy removal
- Available in two shapes in rolls of 500 and 2,000 in clear, blue or green
- Perforated rolls available for easy dispensing and inclusion with uncut jobs.

Specifications:

Part #	Description	Color	Dot Size	Package Quantity
1520	LenSaver Dots, Round	Clear	35mm	2,000
1520PERF	LenSaver Dots, Round Perforated Roll	Clear	35mm	2,000
1530	LenSaver Dots, Round	Green	35mm	2,000
1550	LenSaver Dots, Round	Blue	35mm	2,000
1525	LenSaver Dots, Round	Clear	35mm	500
1535	LenSaver Dots, Round	Green	35mm	500
1555	LenSaver Dots, Round	Blue	35mm	500
1620	LenSaver, Dots, Oval	Clear	35 x 25mm	2,000
1620PERF	LenSaver, Dots, Oval Perforated Roll	Clear	35 x 25 mm	2,000
1630	LenSaver Dots, Oval	Green	35 x 25mm	2,000
1650	LenSaver Dots, Oval	Blue	35 x 25mm	2,000
1625	LenSaver Dots, Oval	Clear	35 x 25mm	500
1635	LenSaver Dots, Oval	Green	35 x 25mm	500
1655	LenSaver Dots, Oval	Blue	35 x 25mm	500

To Order Call 800-237-8154 or Fax 800-330-3800



PRACTICAL SYSTEMS INC.

11617 Prospect Road • Odessa, FL 33556
(727) 376-7900 • Fax (727) 372-1900
(800) 237-8154 • Fax (800) 330-3800
www.LookToPSI.com

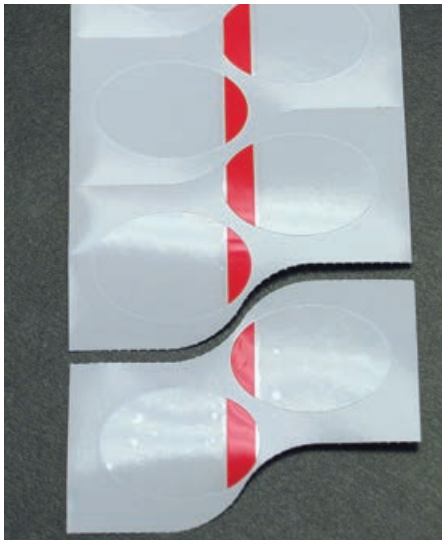
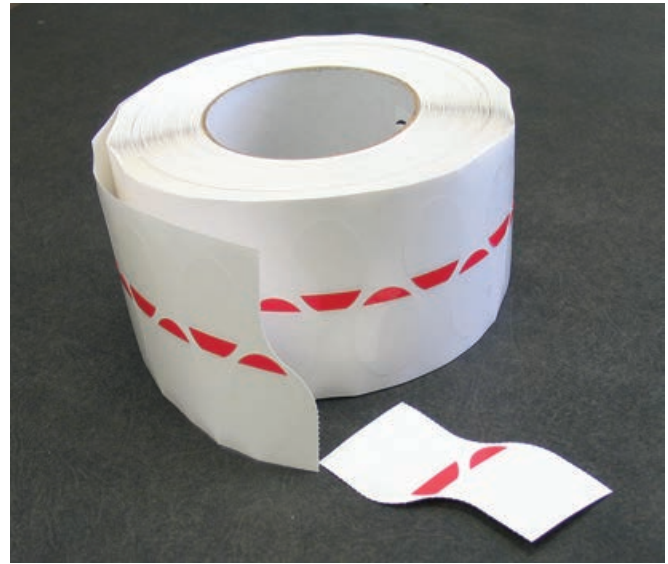


LOOK TO PSI
Performance • Service • Integrity

LenSaver Dots Protect Premium Jobs, In-house and Out

Arm your premium uncut products with LenSaver Dots. Used on both the front and backside of the lens, LenSaver Dots prevent damage from the edger chuck and inhibit slipping and scratching during finishing and deblocking. LenSaver Dots are made of a transparent film, so layout markings are easily visible underneath, and they are double tabbed for quick and easy removal.

PSI's perforated roll makes it simple to include a pair of LenSaver Dots on each job tray or with each pair of uncuts you send out. At just pennies a dot, it only makes sense to protect all your uncut lenses.



Perforated for easy dispensing!

LenSaver Dots are available perforated for easy separation of two dots per sheet. Ideal for dispensing to job trays for in-house jobs or including in uncut shipments to customers.

Part # 1620PERF - clear, 25 x 35mm oval, perforated roll of 2,000
1530PERF - clear, 35 x 35mm round, perforated roll of 2,000

To Order Call 800-237-8154 or Fax 800-330-3800



PRACTICAL SYSTEMS INC.

11617 Prospect Road • Odessa, FL 33556
(727) 376-7900 • Fax (727) 372-1900
(800) 237-8154 • Fax (800) 330-3800
www.LookToPSI.com